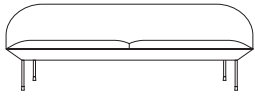


OSLO SOFA SERIES



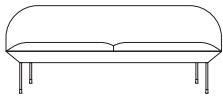
ANDERSSEN & VOLL ON THE DESIGN "We wanted to make a sofa series with a light and inviting appearance, without compromising on comfort. The horizontal division in the seat is important, as it allowed us to add extra comfort in the lower part of the furniture while maintaining an airy overall expression. The Oslo Sofa Series is crafted on the west coast of Norway and with its embracing and rounded softness, it stands as a natural extension to the Nordic touch and friendliness that characterizes the designs of Muuto."

3-SEATER



200 cm / 78.75"

2-SEATER



150 cm / 59"

LOUNGE CHAIR



80 cm / 31.5"

73 cm / 28.75"
SD 54 cm / 21.25"

78 cm
SH 42 cm /
16.5"

POUF



100 cm / 39.5"

73 cm / 28.75"

42 cm /
16.5"

BENCH



150 cm / 59"



Fiord 151 /
Dark Grey

Fiord 551 /
Light Grey

Steelcut 180 /
Dark Grey

Steelcut Trio 966 /
Dark Grey



Vidar 554 /
Navy Blue

Vidar 472 /
Burnt Yellow

DESIGNED BY / YEAR OF DESIGN

Anderssen & Voll / 2013

ABOUT THE DESIGNER

Anderssen & Voll are two thirds of the former Norway Says and among the most prominent and successful Norwegian designers. They have formerly been named both Norwegian and Scandinavian Designers of the Year in Norway and have received international awards and recognition for their work with furniture, lighting, and home accessories.

CATEGORY

3-seater sofa, 2-seater sofa, chair, pouf & bench

ENVIRONMENT

Indoor

COUNTRY OF PRODUCTION

Denmark

PREASSEMBLED

Yes - Mount legs

DESCRIPTION

Consists of a 3-seater sofa, 2-seater sofa, chair, pouf, and, bench. Works well both in home settings, receptions, lounge areas, or lobbies.

PRODUCTION PROCESS

Produced and upholstered in Denmark. The shell is made from casted foam.

MATERIAL

Inner frame of steel, Nozag springs, legs of steel with powder coated surface and fabric from Kvadrat.

CLEANING AND CARE

Remove non-greasy stains by carefully dabbing with a lint-free cloth or sponge wrung out in clean warm water. If necessary, clean by dabbing with soapy water with a little dish soap. Finally, dab the surface with clean water. See kvadrat.dk for further cleaning and maintenance instructions for your chosen textile.

MADE-TO-ORDER

The Oslo Bench and Pouf are made-to-order. The Oslo series can be upholstered in all colors from Kvadrat's Steelcut, Steelcut Trio, Fiord, Clara, Hallingdal, Divina, Divina MD, Divina Melange & Vidar textile series or in Faux Leather.

TEXTILE / BASE COLOR CODE

Fiord 151 / Dark Grey - RAL 7026

Fiord 551 / Light Grey - RAL 7010

Steelcut 180 / Dark Grey - RAL 7026

Steelcut Trio 966 / Dark Grey - RAL 7026

Vidar 554 / Navy Blue - RAL 5004

Vidar 472 / Burnt Yellow - RAL 8001

TEXTILE USE FOR CUSTOMIZED UPHOLSTERY

Pouf: 1,3 m / 1.2 yds

Bench: 2 m / 2.1 yds

2-Seater: 3,8 m / 4.1 yds

3-Seater: 4,8 m / 5.1 yds

Chair: 2,1 m / 2.1 yds

TESTS & CERTIFICATIONS

EN 1022:2005 - L2: Extreme use

Domestic furniture - Seating - Determination of stability.

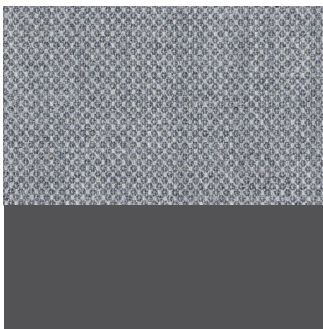
EN 16139:2013 - L2: Extreme use

Furniture - Strength, durability and safety - Requirements for non-domestic seating.

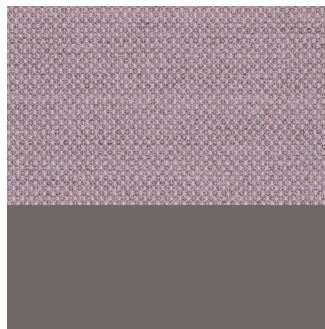


OSLO SOFA SERIES

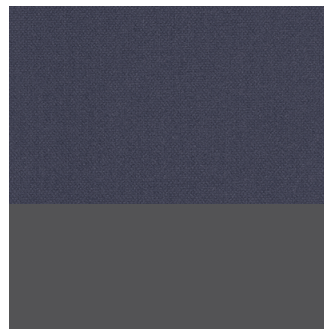
STOCK VERSION – TEXTILE/LEGS



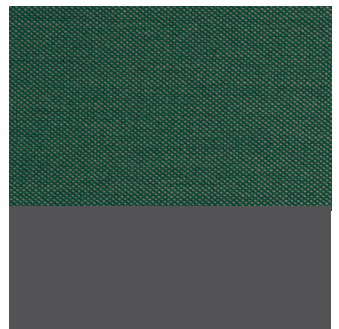
Fiord 151 /
Dark Grey – RAL 7026



Fiord 551 /
Light Grey – RAL 7010



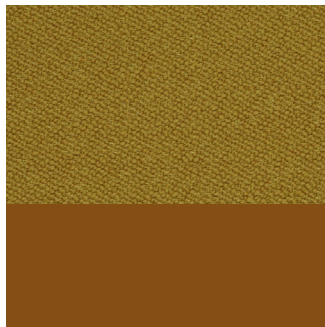
Steelcut 180 /
Dark Grey – RAL 7026



Steelcut Trio 966 /
Dark Grey – RAL 7026



Vidar 554 /
Navy Blue – RAL 5004



Vidar 472 /
Burnt Yellow – RAL 8001

MADE-TO-ORDER – LEG COLORS



Black
– RAL 9017



Dark Grey
– RAL 7026



Light Grey
– RAL 7010



Midnight Blue
– RAL 5004



Burnt Yellow
– RAL 8001



Yellow
– RAL 1005

MUUTO